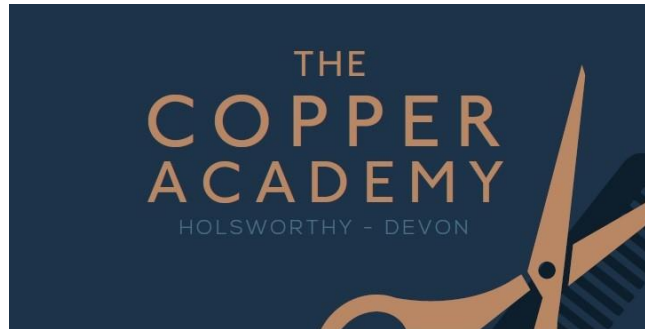


Exclusion policy



Approved by: Headteacher

Last reviewed on: January 2023

Next review due by: January 2024

1. Aims

Our school aims to ensure that:

- › The exclusions process is applied fairly and consistently
- › The exclusions process is understood by governors, staff, parents and pupils
- › Pupils in school are safe and happy
- › Pupils do not become NEET (not in education, employment or training)

2. Legislation and statutory guidance

It is based on the following legislation, which outline schools' powers to exclude pupils:

- › Section 52 of the Education Act 2002, as amended by the Education Act 2011
- › The School Discipline (Pupil Exclusions and Reviews) (England) Regulations 2012

In addition, the policy is based on:

- › Part 7, chapter 2 of the [Education and Inspections Act 2006](#), which looks at parental responsibility for excluded pupils
- › Section 579 of the [Education Act 1996](#), which defines 'school day'
- › The [Education \(Provision of Full-Time Education for Excluded Pupils\) \(England\) Regulations 2007](#), as amended by [The Education \(Provision of Full-Time Education for Excluded Pupils\) \(England\) \(Amendment\) Regulations 2014](#)

3. The decision to exclude

Only the headteacher, can exclude a pupil from school. A permanent exclusion will be taken as a last resort.

Our school is aware that off-rolling is unlawful. Ofsted defines off-rolling as:

“...the practice of removing a pupil from the school roll without a formal, permanent exclusion or by encouraging a parent to remove their child from the school roll, when the removal is primarily in the interests of the school rather than in the best interests of the pupil.”

We are committed to following all statutory exclusions procedures to ensure that every child receives an education in a safe and caring environment.

A decision to exclude a pupil will be taken only:

- › In response to serious or persistent breaches of the school's behaviour policy, **and**
- › If allowing the pupil to remain in school would seriously harm the education or welfare of others

Before deciding whether to exclude a pupil, either permanently or for a fixed period, the headteacher will:

- › Consider all the relevant facts and evidence, including whether the incident(s) leading to the exclusion were provoked
- › Allow the pupil to give their version of events

4. Definition

For the purposes of exclusions, school day is defined as any day on which there is a school session. Therefore, INSET or staff training days do not count as a school day.

5. Roles and responsibilities

5.1 The headteacher

Informing parents

The headteacher will immediately provide the following information, in writing, to the parents of an excluded pupil:

- The reason(s) for the exclusion
- The length of a fixed-term exclusion or, for a permanent exclusion, the fact that it is permanent
- Information about parents' right to make representations about the exclusion to the governing board and how the pupil may be involved in this
- How any representations should be made
- Where there is a legal requirement for the governing board to meet to consider the reinstatement of a pupil, and that parents have a right to attend a meeting, be represented at a meeting (at their own expense) and to bring a friend

The headteacher will also notify parents by the end of the afternoon session on the day their child is excluded that for the first 5 school days of an exclusion, or until the start date of any alternative provision where this is earlier, parents are legally required to ensure that their child is not present in a public place during school hours without a good reason. Parents may be given a fixed penalty notice or prosecuted if they fail to do this.

If alternative provision is being arranged, the following information will be included when notifying parents of an exclusion:

- The start date for any provision of full-time education that has been arranged
- The start and finish times of any such provision, including the times for morning and afternoon sessions, where relevant
- The address at which the provision will take place
- Any information required by the pupil to identify the person they should report to on the first day

Where this information on alternative provision is not reasonably ascertainable by the end of the afternoon session, it may be provided in a subsequent notice, but it will be provided no later than 48 hours before the provision is due to start. The only exception to this is where alternative provision is to be provided before the sixth day of an exclusion, in which case the information can be provided with less than 48 hours' notice with parents' consent.

Informing the governing board

The headteacher will immediately notify the governing board.

- A permanent exclusion, including when a fixed-period exclusion is followed by a decision to permanently exclude a pupil
- Exclusions which would result in the pupil being excluded for more than 5 school days (or more than 10 lunchtimes) in a term
- Exclusions which would result in the pupil missing a public examination

5.2 The governing board

The will be notified immediately of any exclusions by the headteacher Emma Hosie.

The governing board has a duty to consider the reinstatement of an excluded pupil (see section 6).

Within 14 days of receipt of a request, the governing board will provide the secretary of state with information about any exclusions in the last 12 months.

For a fixed-period exclusion of more than 5 school days, the governing will arrange suitable full-time education for the pupil. This provision will begin no later than the sixth day of the exclusion.

Provision does not have to be arranged for pupils in the final year of compulsory education who do not have any further public examinations to sit.

6. Considering the reinstatement of a pupil

The governing board will consider the reinstatement of an excluded pupil within 15 school days of receiving the notice of the exclusion if:

- The exclusion is permanent
- It is a fixed-term exclusion which would bring the pupil's total number of school days of exclusion to more than 15 in a term
- It would result in a pupil missing a public examination or national curriculum test

If requested to do so by parents, the governing board will consider the reinstatement of an excluded pupil within 50 school days of receiving notice of the exclusion if the pupil would be excluded from school for more than 5 school days, but less than 15, in a single term.

The governing board can either:

- Decline to reinstate the pupil, or
- Direct the reinstatement of the pupil immediately, or on a particular date

In reaching a decision, the governing board will consider whether the exclusion was lawful, reasonable and procedurally fair and whether the headteacher followed their legal duties. They will decide whether or not a fact is true 'on the balance of probabilities', which differs from the criminal standard of 'beyond reasonable doubt', as well as any evidence that was presented in relation to the decision to exclude.

Minutes will be taken of the meeting, and a record of evidence considered kept. The outcome will also be recorded on the pupil's educational record.

The governing board will notify, in writing, the headteacher, parents, along with reasons for its decision, without delay.

Where an exclusion is permanent, the governing board's decision will also include the following:

- The fact that it is permanent
- Notice of parents' right to ask for the decision to be reviewed by an independent review panel, and:
 - The date by which an application for an independent review must be made
 - The name and address to whom an application for a review should be submitted
 - That any application should set out the grounds on which it is being made and that, where appropriate, reference to how the pupil's SEN are considered to be relevant to the exclusion
 - That parents may, at their own expense, appoint someone to make written and/or oral representations to the panel, and parents may also bring a friend to the review
- That if parents believe that the exclusion has occurred as a result of discrimination, they may make a claim under the Equality Act 2010 to the first-tier tribunal (special educational needs and disability), in the case of disability discrimination, or the county court, in the case of other forms of discrimination. A claim of discrimination made under these routes should be lodged within 6 months of the date on which the discrimination is alleged to have taken place

7. School registers

A pupil's name will be removed from the school admissions register if:

- 15 school days have passed since the parents were notified of the exclusion panel's decision to not reinstate the pupil and no application has been made for an independent review panel, or
- The parents have stated in writing that they will not be applying for an independent review panel

Where an application for an independent review has been made, the governing board will wait until that review has concluded before removing a pupil's name from the register.

8. Returning from a fixed-term exclusion

Following a fixed-term exclusion, a re-integration meeting will be held involving the pupil, parents, a member of senior staff and other staff, where appropriate.

9. Monitoring arrangements

The office manager monitors the number of exclusions every term and reports back to the headteacher.

This policy will be reviewed by Emma Hosie every year. At every review, the policy will be shared with the governing board.