

THE
COPPER
ACADEMY
HOLSWORTHY - DEVON



The Youth Programme

The Copper Academy,
Holsworthy Business and training centre,
Holsworthy,
Devon,
EX226DH

[Tel:07779768661](tel:07779768661)

Email: emma@thecopperacademy.co.uk

Certificate
of registration



Registration Number 2626957

At The Copper Academy we have a passion for education for all, and have written and Accredited a pioneering Youth Programme designed especially for students aged 14-18yrs with Social, emotional, academic and mental health needs.

We recognize that sometimes we may have a child who has differences from their peers – learning may take longer, both academically and socially. Despite their tremendous efforts, results are often a fraction of their peers and social acceptance is much harder setting them up for frustration. Instead of a fun and fulfilling experience, school or college can become a breeding ground for anxiety and assignments a battle ground both at home and at their provision; This is exhausting for both parents and child alike.

We also pride ourselves in working closely with families to support learners who may not always be able to attend the academy setting; we are fully accredited for learners to receive a blend of online and academy structure; focusing on the wellbeing of each student. Students needing this structure are supported in the home, with

transport to and from the academy for their studies and with online activities where required.

These places are not just accessible with an EHCP but are for students who are in the private, mainstream, and home school sector that may find the traditional education system a challenge. We help to seek funding from county with an EHCP, charity support or self-funded options available. We work closely with our families, County departments and local support groups to review progression, prepare students for their next stage whether it is a mainstream Apprenticeship or local employment or help them to choose which course they would like to experience next.

At the CA we pride ourselves on promoting STEM (science, technology, engineering and math's) on all our courses. Stem is important because it pervades every part of our lives especially in the study of Hair and Beauty. Making STEM fun and interesting helps the student to do much more than learn, it fosters ingenuity, creativity and experimentation and encourages problem solving. All skills which our students can take through life, thus making contextualized learning being the fundamental basis for all activities here at the CA.

There will be ongoing consideration of learning styles and matching of delivery methods throughout and it is understood that some theoretical topics will not meet the needs of every group member during some sessions. with this in mind, study support and differentiation will be used to support their EDI (equality, diversity and inclusivity) and ELM (every learner matters): Numeracy and Literacy will also be contextualised and embedded into the programme wherever and whenever possible.

There will have 12 places available in this academic year and we are enrolling now for September 2021.



Course content

Students have many different and complex needs, and at The Copper Academy we have designed a programme of education following the Hair and Beauty industry, which will help to extend the confidence to develop literacy and numeracy skills, to work well with others and organise simple tasks and assignments with a positive attitude.

Students will attend up to 5 days per week for a tailored 37-week academic year programme. Each individual place open for up to 4 academic years, funding being required for each year. All units are completed to a pass level or until students become 18 years of age.

The courses will include various teaching and learning strategies including theory workshops, workbooks, learning games, mood boards, group discussions/work, practical demonstrations, and peer observation as well as practical sessions on a manikin head, developing to real model case studies and supported work experience where able.

Hair and Beauty Certificate.

Hair and beauty are at the heart of everything we do at the academy. Students each year will study various units from the list below starting at our entry level topics. These are linked through our comprehensive curriculum topics including PSHE, STEM, Human/social and communication development. We have a comprehensive assessment criterion which can be completed within 1-4 years depending on ability. We provide opportunities for students to be active and interactive; and to develop their co-ordination, control, movement strength and dexterity through practical tasks.

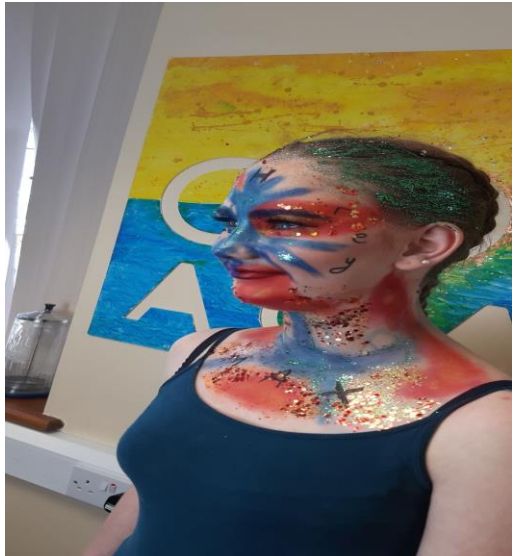
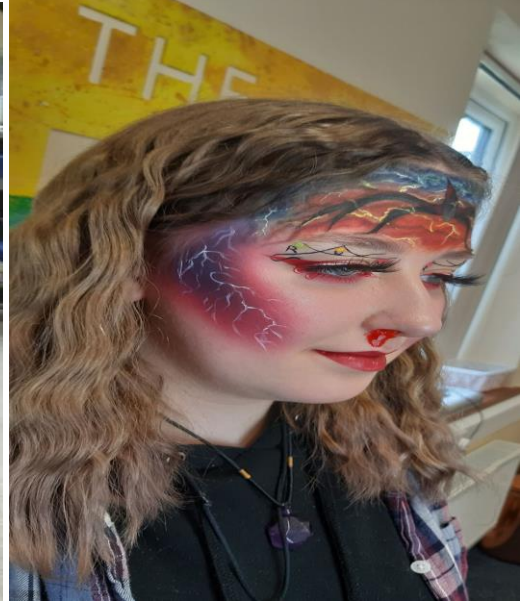
Open units for Entry and progressive levels.

1. Introduction to the Hair and Beauty Industry.
2. Health and safety.
3. Reception studies.
4. Shampoo and conditioning treatments.
5. Women's styling.

6. Plaiting unit.
7. Men's styling.
8. Setting Hair.
9. Temporary Hair Colouring.
10. Manicure.
11. Nail Art.
12. Creative Make-up.
13. Skincare.
14. Creating a complete look.

15.





Numeracy and Literacy at The Youth Programme.

Our objective at The Copper Academy is to provide a focus for learning the essential skills of Numeracy and Literacy within a functional context. Each student will study a comprehensive programme of Numeracy and literacy differentiated to their individual needs. These sessions will be in small group or individually and follow the below specifications.

These posters were created by one of our students Neave to demonstrate her knowledge and we are proudly displaying them in our Classroom for all to see.



Math's Coverage and Range Concepts and skills.

Maths Coverage and Range	Concepts and skills
Understand and use whole numbers and to two decimal places.	<ul style="list-style-type: none"> • Write numbers in words. • Write numbers from words. • Order numbers by size order including numbers to two decimal places. • Recognise even and odd numbers and use the terms for them. • Identify multiples and factors of numbers. • Add, subtract, multiply and divide numbers to two decimal places including that in terms of money context. • Estimate, add and subtract in the concept of money
Understand Fractions, Ratios and Percentages.	<ul style="list-style-type: none"> • Compare fractions. • Write a fraction in its simplest form. • Convert between fractions decimals and percentages. • Shade a fraction on a grid. • Order common fractions. • Understand equivalent fractions to percentages and ratio numbers and be able to convert to them. • Use ratio to divide quantity and space.
Construct diagrams, posters, graphs and workbooks	<ul style="list-style-type: none"> • Measure and draw lines to the nearest mm, cm, inch and foot. • Construct diagrams using images and text to fill space adequately. • Identify relevant information from charts and diagrams. • Calculate amounts, measures and classify use of products. • Fill in and produce charts.
Use data to assess likelihood	<ul style="list-style-type: none"> • Put events in order of likelihood on a probability scale to assess risk and hazard. These distinguishing events which are: impossible, unlikely, equal chance, likely and certain to happen. • Use the language of probability to explain risk and Hazard. • Justify decisions based on a probability scale of risk and hazard.
Understand your place within a classroom setting.	<ul style="list-style-type: none"> • Develop spatial awareness and adapt the use of tools and equipment to fit classroom size, other learners and the equipment required for activities both theory and practical.
Using coins	<ul style="list-style-type: none"> • Learn to count using coins and Notes. • Recognition of different coins. • Value of different coins.

Telling the time	<ul style="list-style-type: none"> • Using a digital clock. • Use a traditional clock.
------------------	--

Literacy Coverage and Range Concepts and skills

Literacy Coverage and Range	Concepts and skills
Speaking, listening and communication	<ul style="list-style-type: none"> • Participate in and understand the main points of conversations. • Respond appropriately to questions asked and during conversations. • Exchange views on topics with peers and staff. • Communicate simple instructions to peers in the group. • Identify and understand simple instructions. • Follow and understand learning conversations. • Express feeling individually or in a group and understand those of others.
Reading	<ul style="list-style-type: none"> • Read and understand short and simple texts that explain or recount information. • Answer questions with appropriate and relevant answers. • Understand chronological texts. • Understand and follow simple instructions and directions. • Understand high frequency key words and spellings. • Use knowledge of alphabetical order to locate information.
Writing	<ul style="list-style-type: none"> • Write short texts with relevant answers. • Use correct grammar, punctuation, and tense. • Answer questions using given worksheets for prompts. • Recognise contextualised text and understand their meaning. • Construct simple sentence structures and headings. • Spell correctly simple contextualised and familiar high frequency key words.

The Art of conversation, clarity of speech and knowing when and how to communicate to be understood are essential skills for life. We work closely with Erin at HelloSALT to promote communication, speech and language for all our learners, this in turn enhancing inclusivity. Staff receive regular training to develop their skills and all students who need support in this area have individual and group SALT sessions where guidance, activities and targets are set for key staff, this enabling maximum growth for our students.

Additional Units.

In addition to the key skills of Hair and Beauty, at the copper academy we know the importance of life skills for our learners. These life skills promote both employability and independence for our students. To promote life skill's we also concentrate on the following fundamental areas for growth and development

PSHE

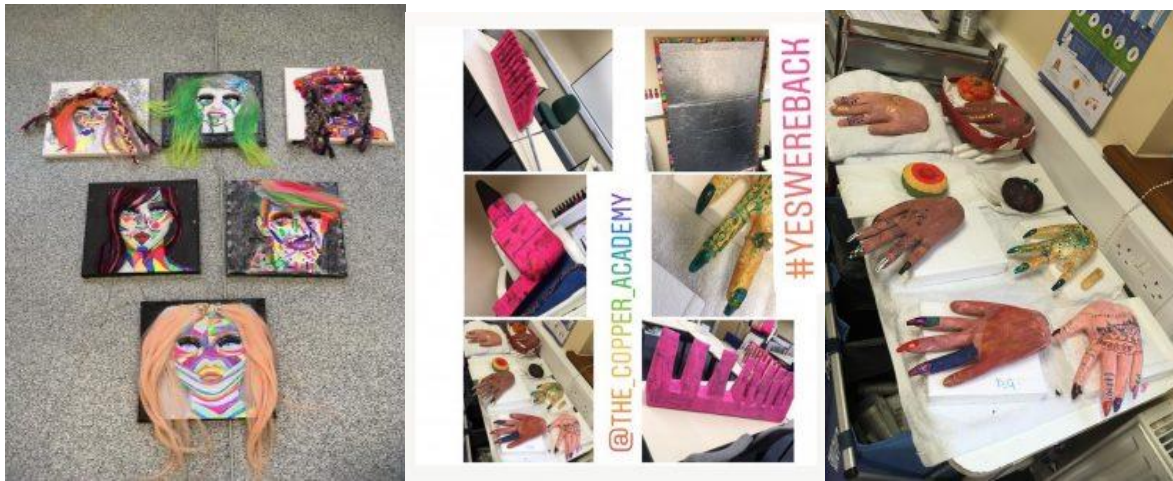
Helping our students to develop a positive sense of themselves, of others and their community. To form positive relationships and develop respect for others. To develop social skills and learn how to manage their feelings. To understand appropriate behaviour in groups and to have confidence in their own abilities. To provide them with simple life skills including work experience. Guiding them to make sense of their physical world and community, through opportunities to explore, observe and find out about people, places, technology and the environment. These skills paramount in every student's journey to independence and employment.

PSHE Units

1. Work experience.
2. Food and nutrition.
3. Natural world
4. Lifeskills.

Expressive Art and Design

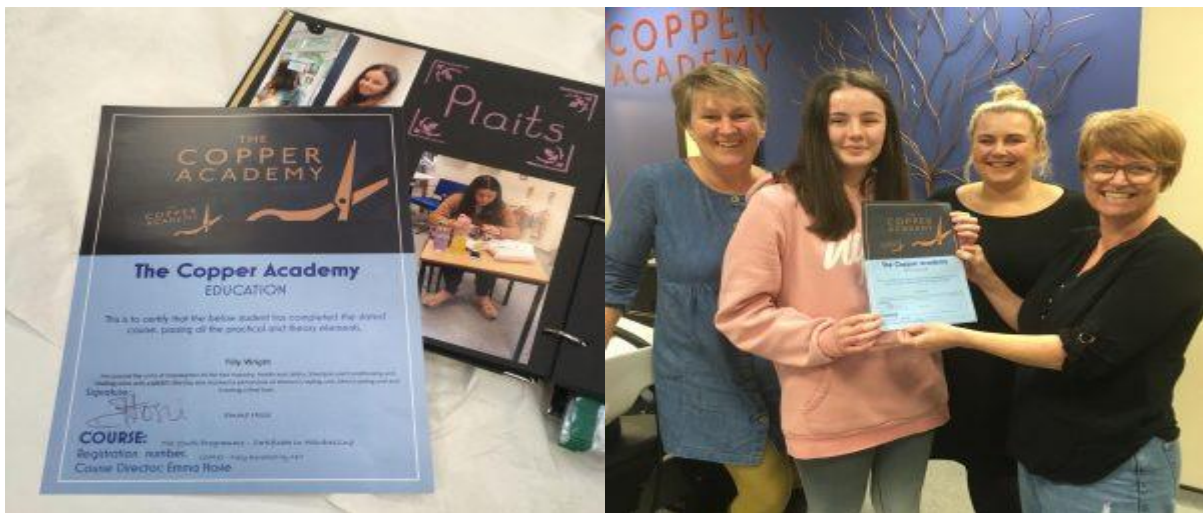
We involve our students in exploring and creating assignments with a wide range of media and materials, as well as providing opportunities for them to share their thoughts, ideas, and feelings through classroom activities. Creative Art is another positive way of developing dexterity, fine motor skills, Numeracy, communication, and language.



Grading boundaries.

The full Certificate is graded at a Pass, Merit or Distinction and these marking boundaries are set out below.

All students get a certificate, course folder and photo diary of their time with us.



Students of all abilities are welcome at the academy and the initial academic standard will usually set the level of grade boundaries that the learner will aim for. Nevertheless each learner will receive stretch tasks to achieve their maximum potential.

Theory

Pass; Students have had significant help with the ideas and writing part of the course. Spelling and grammar are incorrect, and the assignments are not laid out neatly.

Merit; Students have completed the work independently but have minor grammatical and errors.

Distinction; Students have had no help and the work is grammatically correct.

Practical

Pass; Students have had support with both ideas and application but have achieved the final assessment piece themselves.

Merit; Student has had minor support with either ideas or application and completes the assessment within a timeframe.

Distinction; Student has had no support throughout practical, plus health and safety can be recited throughout.

Fees for enrolment 21/22

Course fees	One to one support staff.	Supported Transport
2-day enrolment - Part time £6500 per year.	2-day personal/academic support £4000 per year	Cost dependent on mileage.
3-day enrolment - Full time £9750 per year	3-day personal/academic support £6000 per year.	Cost dependent on mileage.

Fees are payable on the 1st day of the Autumn term each year.

Student fees are non-refundable if a student drops out of the programme due to absence, sickness or expulsion.

Behaviour

Disrespectful or aggressive behaviour will not be tolerated towards staff, students and support workers attending the programme. These students displaying this behaviour will be sent home and if the behaviour is repeated to the point where others are affected then they will be asked to leave the programme. No refund of programme fees will be given to these students.

For more information see our Behaviour policy, Anti-bullying policies at

www.thecopperacademy.co.uk

Policies at the CA

Please find the link of the currently available company policies for The Copper Academy at www.thecopperacademy.co.uk. These include: Accident Policy, Anti-Discrimination Policy, Anti Bullying Policy, Behaviour Policy, Complaints Policy, Confidentiality Policy, Covid Policy, Data Protection Policy, Equal Opportunity Policy, Health and Safety Policy, Mobile Phone Policy, Online Learning Policy, Safeguarding Policy, Special Educational Needs Policy, Visitors Policy.

Application process

If you have any questions about the course please contact Emma Hosie.

Application forms are available on request from emma@thecopperacademy.co.uk

ENROLMENTS OPEN NOW!!!

